

Nature Scavenger Hunt:

Making Inferences



Kruckeberg
Botanic Garden

An **inference** is a conclusion made using evidence or reasoning.

Talk a walk through Kruckeberg Botanic Garden, your neighborhood, or even your own backyard. As you walk, read each clue, then try to see if you can guess what each item might be. Look around you, your surroundings might help you answer each clue. Write or draw your answer in each box.

I am colorful and grow from the ground. You might notice birds, butterflies, or bees all around. What am I?

Look up to the trees to find me. Many different shapes, sizes, and colors I can be. I help the trees make energy from sun, I am a sign that spring has come. What am I?

Even though you can't always see me, every day I come and go. My light and warmth help all living things live and grow. What am I?

You have to look quick to see me on the wing. Listen closely and hear me sing. What am I?

My bushy grey tail helps me balance as I climb high up in the trees. I look for nuts and snacks to eat during winter's freeze. What am I?

You'll have to look very carefully to see me as I wriggle and crawl underground. I help make soil but never make a sound. What am I?

I'm up in the sky and can be white or grey, It depends on the weather we're having today. What am I?

If I'm too long you'll need to mow. I have blades but won't cut your toe. What am I?

Nature Scavenger Hunt: Making Inferences - Answer Key



Kruckeberg
Botanic Garden

An **inference** is a conclusion made using evidence or reasoning.

Talk a walk through Kruckeberg Botanic Garden, your neighborhood, or even your own backyard. As you walk, read each clue, then try to see if you can guess what each item might be. Look around you, your surroundings might help you answer each clue. Write or draw your answer in each box.

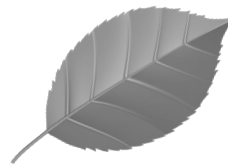
I am colorful and can grow short or tall out of the ground. You might notice birds, butterflies, or bees all around. What am I?

Flower



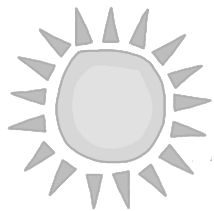
Look up to the trees to find me. Many different shapes, sizes, and colors I can be. I help the trees make energy from sun, I am a sign that spring has come. What am I?

Leaf



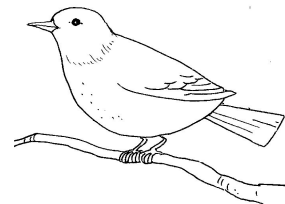
Even though you can't always see me, every day I come and go. My light and warmth help all living things survive and grow. What am I?

Sun



You have to look quick to see me on the wing. Listen closely and hear me sing. What am I?

Bird



My bushy grey tail helps me balance as I climb high up in the trees. I look for nuts and snacks to eat during winter's freeze. What am I?

Squirrel



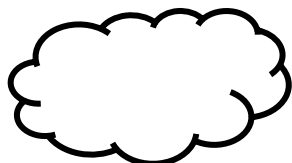
You'll have to look very carefully to see me as I wriggle and crawl underground. I help make soil but never make a sound. What am I?

Earthworm



I'm up in the sky and can be white or grey, It depends on the weather we're having today. What am I?

Cloud



If I'm too long you'll need to mow. I have blades but won't cut your toe. What am I?

Grass

