

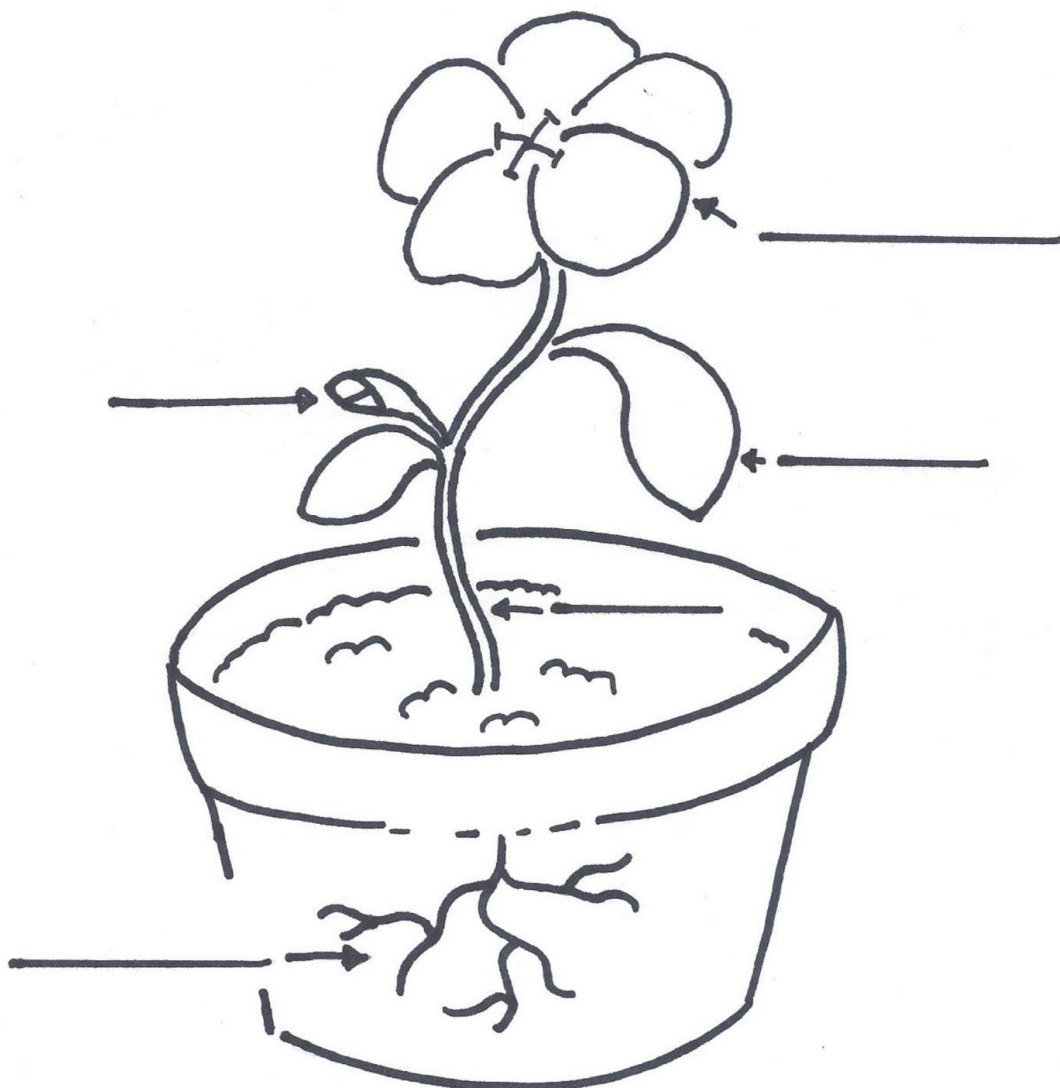
Flower Power

Parts of the Plant



Kruckeberg
Botanic Garden

Color in your plant and label each part. Learn more about what each part of the plant does on the next page



word Bank

Stem

Flower

Root

Leaf

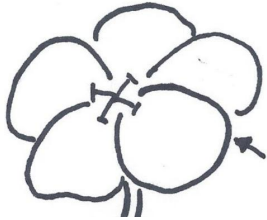
Bud

Flower Power

Parts of the plant



Kruckeberg
Botanic Garden



Flower

The **Flower** creates seeds, which sprout into new plants.

Flowers can look very different from one another, depending on the plant. Some flowers are big and colorful, while others are very small or hidden.

Learn more about parts of the flower in the next activity.



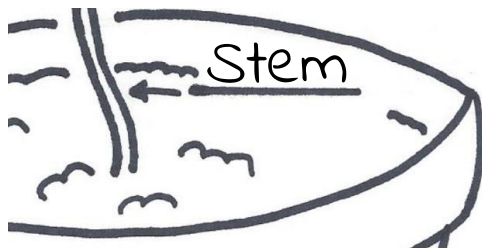
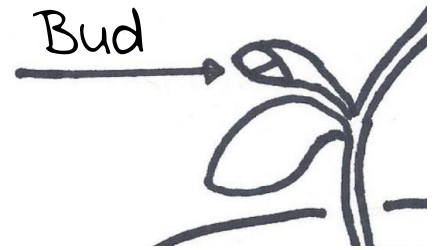
Leaf

The **Leaf** absorbs sunlight and carbon dioxide to make food for the plant in a process known as **photosynthesis**.

Leaves can be all different shapes and sizes. Some plants lose their leaves in the fall, while others do not.

The **Bud** will open into a new flower.

Plants often grow lots flowers and buds so they can make as many seeds as possible.



The **Stem** supports the plant, holding the flowers and leaves up.

The stem also carries food, water, and nutrients to help the plant grow.

The **Roots** help anchor the plant in the ground.

The roots also collect water and nutrients from the soil, kind of like a straw.

