

# Flower Power

## Dissect a Flower



Kruckeberg  
Botanic Garden

Ever wonder what the inside of a flower looks like? Get a bee's view of a flower with this fun and educational activity for students of all ages.

### Materials

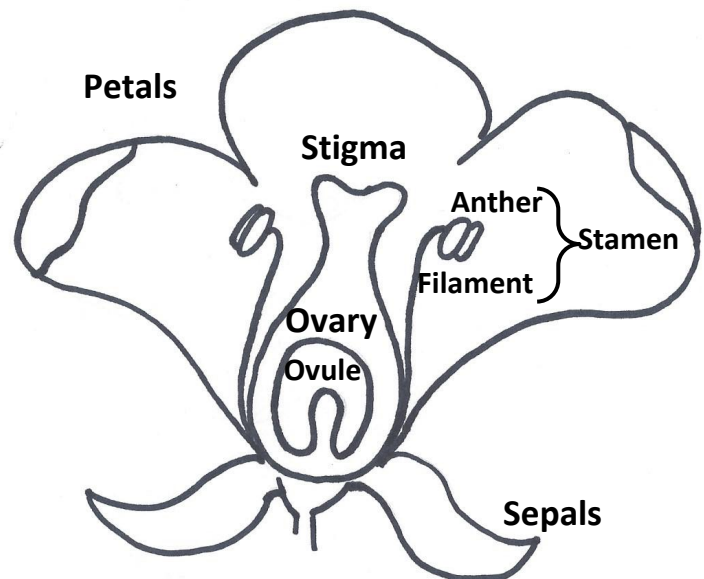
- Flower(s)
- Blank paper
- Colored pencils or markers
- Scissors or exacto knife\*
- Hand lens or magnifying glass

\*Parental supervision recommended

### Directions

1. First, take some time to observe your flower. Note its color, shape, size, or any other unique features. Draw it on your paper.
2. Using scissors or an exacto knife, cut your flower in half. If possible, try to cut through the base or ovary of the flower to see inside.
3. Draw your observations, taking notes and/or labeling parts you can see.
4. Continue to cut apart the flower, try separating individual pieces apart, draw what you see.

### Parts of the flower



The **petals** protect the inside of the flower, the color and shape attracts pollinators.

The **stamen** is made up of an **anther**, which produce **pollen**, and the **filament**, which holds the anther.

The **stigma** collects pollen and carries it to the ovary.

The **ovary** protects the ovule and, in some plants, becomes a fruit.

The **Ovule** produces seeds. The seeds are fertilized by pollen.

The **sepals** are the outermost petals.